



GOLD FIELDS

SOUTH DEEP

Trusts Report 2023



South Deep
Education
Trust



South Deep
Community
Trust



safety



integrity



respect



responsibility



innovation



collaborative
delivery

Our Purpose Creating enduring value beyond mining

South Deep Trusts

The South Deep Education Trust (SDET) and the South Deep Community Trust (SDCT) were established by Gold Fields in October 2010 as part of South Deep’s Black Economic Empowerment ownership structure and receive annual dividend income from the mine. The Trusts are run independently each with their own Administrator, Auditors and Board of Trustees. The objectives of both trusts are set out in the respective trust deeds, as summarised below:



The South Deep Community Trust established community gardens at four primary schools

SDET

The objective of the SDET is to use accruals to the trust to drive education initiatives and make a positive change in our host communities and labour-sending areas. The trust focuses on:

Education

Educational training facilities, board and lodging, tuition, scholarships, bursaries, skills development, provision of school buildings, equipment for educational institutions, curriculum support, school development, safety and security at schools, outreach programmes, study and research.

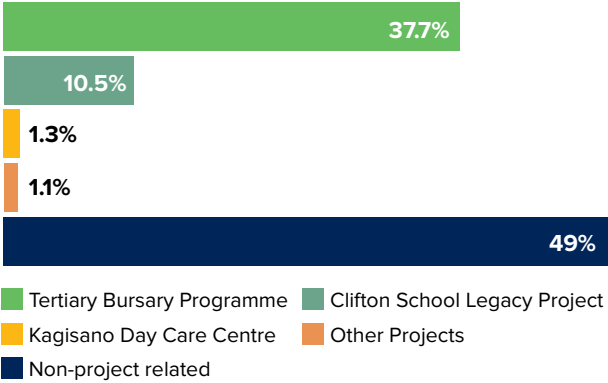
Charities

Donations to charitable institutions with similar objectives to the SDET.

Community Education-based Projects

Self-help, poverty alleviation, empowerment, capacity-building, provision of training, support or assistance to emerging micro-enterprises

SDET spend for 2023



Since its inception, the SDET has invested more than R76.7 million towards improving access to quality basic and post-school education, reaching over 1,200 beneficiaries across our host communities and labour-sending areas. In 2023 specifically, the SDET spent R2.6 million on its initiatives, with the majority (37.65%) spent on the tertiary bursary programme.

R76.7 million spent to improve access to quality basic and post-school education, reaching over 1,200 beneficiaries across our host communities and labour-sending areas.

South Deep Trusts continued

Projects supported by the SDET

The SDET has supported a number of initiatives over the years including:



Grade 7 awards:

Awarded scholarships to top achieving Grade 7 students from Westonaria to attend high-performing high schools across the country. This programme has been discontinued.



EduMap

Supported post-Matric students to rewrite their Grade 12 exams for subjects in which they did not perform well. The project was concluded in 2021, with 20 students benefitting from this initiative. Of those students, 19 completed the course, obtained a bachelor's pass and most have pursued tertiary studies. This programme has been discontinued.

The Trust has also supported Ad hoc projects as requested by community stakeholders. These include a Career Day in June 2022, attended by 580 learners from three schools within our host communities.

The year 2023 saw the continuation of the SDET's initiatives which focused on the tertiary bursary programme and the Clifton School Legacy Project. The 2023 highlights for these initiatives are provided below.



Tertiary Bursary Support

The tertiary bursary programme was introduced in 2015 to support students from host communities and labour-sending areas to complete their undergraduate qualifications. The bursary covers tuition and accommodation costs, textbook and laptop allowances and a monthly stipend. Students with various mining and non-mining qualifications have benefited from the programme, with some 80 students supported since its inception. In 2023, 16 students were supported of which eight (50%) were male and eight (50%) were female. One of the notable highlights for 2023 was a partnership with Gold Fields which offered vacation work opportunities to nine students funded through the bursary programme. Vacation work is a new component of the tertiary bursary programme as outlined in the SDET Horizon 2030 Strategy and approved in November 2023.



Clifton School Legacy Project

This project was introduced in 2012 providing 100% primary and high school scholarships to learners from KwaZulu-Natal labour-sending areas, to attend Clifton School. The scholarship includes tuition, boarding, textbooks, laptops and ancillaries. Since its inception, the project has supported 23 boys of which, 21 have matriculated and gone on to pursue their studies in various fields. In 2023, three boys (one in Grade 12 and two in Grade 11) were being supported, with one matriculating with a Bachelor's pass. The Clifton project is nearing completion and the two remaining learners are expected to matriculate at the end of 2024. The programme is coming to an end at the end of 2024.

With the SDET's 2019 five-year strategy nearing the end of its cycle, 2023 was a critical year for reflecting on the Trust's work, evaluating its relevance to the intended beneficiaries, and crafting a way forward for the Trust's work. To this end, Tshikululu reviewed the SDET's 2015-2019 strategy and presented the Horizon 2030 strategy recommendations, which were approved at the November 2023 Trustee meeting.

This strategy identifies three key pillars that will enable the SDET to contribute towards creating **"stable, connected and thriving communities"**:

- Early Childhood Development
- Quality Public Schools
- Tertiary Bursary Programme

The Horizon 2030 Strategy is detailed on page 5.

SDCT

The core objective of the SDCT is to provide funding for poverty alleviation, community development and infrastructure development by utilising donations and other accruals to the trust to drive socio-economic development and a positive change in our host communities. Since its inception, the South Deep Community Trust has meaningfully invested more than R15.03m in our host communities and labour-sending areas.

The trust focuses on:



Community development projects

Aimed at job creation, establishment of educational facilities, adult literacy, and development of infrastructure within the Community.



Promotion of Community-based projects

Self-help, poverty alleviation, empowerment, capacity building, provision of training, support or assistance to emerging micro-enterprises.



Provision of Resources

Provision of training, support or assistance to community-based projects.



Donation to Charities

Donations to charitable institutions with similar objectives to the SDCT.

Some of the projects supported by the SDCT:



Kagisano Day Care Centre

Kagisano Day Care Centre is a world-class Early Childhood Development (ECD) facility in Hillshaven, offering care and education to young children. The centre has well-maintained facilities and classrooms and provides a nurturing environment that fosters children's cognitive, social, and emotional growth. The Centre provides a daycare and creche where preschool children are provided with holistic early childhood development which includes care, healthy meals and developmental activities. Focusing on children from low or no-income families, Kagisano supports 100 to 150 children daily. Since its official opening in October 2022, the centre has successfully transitioned 30 children to primary school, with 22 entering Grade 1 and eight starting Grade R.

A significant achievement was securing a Service Level Agreement (SLA) to the value of R448,000 (dispersed quarterly) with the Department of Basic Education. This funding is crucial for the centre's operations and represents a major step forward in its financial stability.

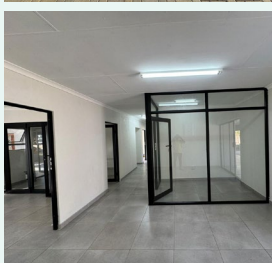


The SMME Hub

The SMME Hub, located in Westonaria, operates in partnership with South Deep. Its primary goal is to support the development of small and medium-sized enterprises (SMMEs) through programmes that benefit both the mining and non-mining sectors within the community.



A major investment this year was the renovation of the Hub. A call for proposals attracted 25 bids from different companies. The South Deep Procurement team selected a contractor who hired local workers from Poortjie, Borwa, Simunye, and Bekkersdal. The Trust contributed R648,519 to the renovation project, while South Deep invested a total of R1,311,959 as part of its social and labour plan (SLP) commitment. This spending was divided between R431,572 in 2023 and R880,397 in 2024. The renovation created 17 temporary jobs for local residents—14 men and 3 women. The project was finished in the second quarter of 2024.

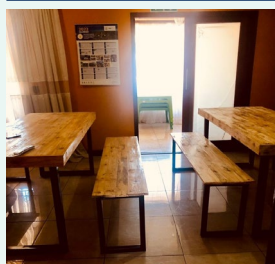


In 2023, the Hub focused on two main programmes: Mathematics and Science, and project management training. A partnership with Rand West City Local Municipality led to a Youth Revitalisation Dialogue in June, attended by 12 young entrepreneurs.

The Hub operated with a budget of R88,281 and employed five local staff members: two men and three women. It served the community through 998 walk-in visits, 148 consultations, 214 inquiries, and 32 venue bookings. Currently, there is high demand for office space at the Hub, with four local businesses on a waiting list. Additionally, the National Youth Development Agency (NYDA) is considering establishing its office at the Hub.

South Deep Trusts continued

Some of the projects supported by the SDCT continued:



Hope For Our Children (HFOC)

HFOC is a non-profit organisation dedicated to caring for orphans and vulnerable children in Westonaria. The centre currently provides a home for 12 children, including eight girls and five boys, aged 0 to 12. In 2023, a generous donation of R120,000 from the South Deep Trust funded essential items like beds and furniture, supporting five jobs at the centre. The Tshikululu team is committed to continuing its partnership with HFOC and will actively seek additional funding to ensure the ongoing well-being of the children.



Sports pitch competition

A call was issued to local sporting organisations inviting applications for sports gear and equipment. After the submissions were carefully evaluated, five organisations were awarded a total of R22,231.95 in support, benefitting 510 community members.

The recipients were:

- Focus Youth Empowerment (netball)
- Bekkersdal Boxing Academy
- Westonaria Sports Academy (soccer)
- Champion City Academy (soccer)
- West Youth Academy (netball and soccer)



Sizabantu

Sizabantu Traditional Healers and Home-Based Care is a non-profit organisation that has been a cornerstone of healthcare in the Bekkersdal community since 1992. Sizabantu began its journey with a group of dedicated local herbalists and traditional healers who saw the urgent need for accessible healthcare in a community lacking permanent medical facilities. Over the years, they have evolved to address significant health challenges, such as the HIV/AIDS epidemic and chronic diseases. Their partnership with the Department of Health enabled them to distribute medication and provide home-based care for patients unable to access limited clinic services.

Sizabantu's efforts have expanded to include daily testing, counselling, and the distribution of condoms and contraceptives across multiple communities, including Bekkersdal, Simunye, Borwa, Hillshaven, Thusanang, and Venterspost. In the past three decades, they have employed over 1,000 caregivers, with more than 80% advancing to become professional nurses in local clinics. Currently, they have 26 permanent staff and 13 caregivers under the Department of Health, serving 65 home-based patients and testing over 200 individuals daily for chronic illnesses and HIV, referring them to clinics as needed.

In 2020, Sizabantu was selected for the Department of Health's CCMD (Central Chronic Medicine Dispensing and Distribution) programme. However, they faced a space constraint, and the South Deep Community Trust supported them with a much-needed container valued at R 190,000 to store and distribute medication. Sizabantu envisions a future where they leverage advanced technologies to improve healthcare delivery, streamline medication distribution, and enhance patient care in underserved communities.



Adhoc projects

The SDCT and SDCT celebrated a decade of community impact at their first annual year-end function. The event brought together local leaders including the Ward Counsellor and other local municipality officials, South Deep Trustees, and tertiary bursary recipients and alumni.

A highlight of the evening was the presentation of sports equipment to the winners of the 2023 Sports Equipment Competition. To qualify, sports centres and clubs had to demonstrate their community involvement and explain how the new equipment would benefit their players.

Revised strategy

Over the past year, the Trusts conducted a review of their strategy, jointly agreeing on the following strategic framework.



Vision for 2040

Becoming a trusted partner in the social development journey of South Deep communities, focusing efforts on becoming a stable, connected and thriving community.



Mission

Playing an advocacy and facilitative role in aligning initiatives and funding for South Deep communities, to stimulate systemic change and improvement in capacity and resilience, connection to knowledge, levels of education and employability of the community members.

Strategic Pathways

In pursuit of the Trusts' community being stable, connected and thriving by 2040, the Trusts will work to:

- bring about equity and community strengthening;
- build social capital and partnerships and digital connectedness; and
- pursue greater economic growth, development and quality of life.

The Horizon 2030 Strategy is detailed in the sections that follow.

Sustainability Drivers

The positive changes the community needs to see, will be sustained by:

- children who are confident and curious;
- youth who are focused and engaging;
- local enterprises that are thriving; and
- communities that are connected.



Horizon 2030

The Trusts have outlined a 15-year plan to reach 2040, divided into three five-year phases with key milestones in 2030 and 2035. The initial phase, ending in 2030, will see the Trusts focus their social investments on five key program areas:



Community Programme

This programme's goals are:

1. To provide a safe, inclusive, and accessible space for connection within the community;
2. To champion a collaborative Impact response to a priority community need through the Rand West Round Table by 2025;
3. To strengthen existing community networks so that the incidence of stunting in targeted communities is halved by 2030 (on track for zero stunting by 2035);
4. To provide ad hoc support to local initiatives responding to emergency disaster relief in targeted communities and labour-sending areas.

Early Childhood Development Programme (ECD)

This programme has two broad goals, which are to:

1. Strengthen the provision of quality ECD services across all target communities by 2030 by:
 - 1.1. Building the capacity of local centre-based and non-centre-based ECD practitioners, through training, coaching, and mentoring;
 - 1.2. Ensuring that every community has access to at least one full-service ECD Centre by 2040.
2. Ensure that every child in target communities has access to quality early learning stimulation pre-grade-R, by 2030.

Quality Public Schools Programme

The programme seeks to engender:

- Positive learning experiences and improved developmental progress for children; and
- Opportunities for the youth to be more engaged and focused.

In achieving the above, the following three focus areas have been identified, and are listed in order of priority:

1. Foundation Phase improvement, with a focus on literacy and numeracy;
2. Youth personal and leadership development. and
3. School infrastructure and resourcing improvement (a very modest provisioning).

Tertiary Bursary Programme

This programme aims to achieve the following objectives:

- Improving the life chances of young people;
- Broadening the skills-set required for building thriving communities; and
- Providing opportunities for the beneficiaries to be well-rounded graduates who are professionally and personally equipped for the world of work.

The bursary programme has three focus areas:

1. Financial sponsorship for students to study;
2. Vacation and community work; and
3. Personal development support.

Enterprise Programme

This programme has two broad goals, which are to:

1. Establish a local venue (receiving house) or community enterprise development hub, that:
 - 1.1. serves as an integrated centre for skills, support, and opportunity, advancing beneficial economic participation for the local community;
 - 1.2. ensures local SMMEs have access to tools and resources that will enable them to thrive; and
 - 1.3. can generate its own income such that it achieves self-sustainability by 2028.
2. Source programmes (production house) providing enterprise training, mentorship, coaching, and support that:
 - 2.1. cultivate a dynamic and diverse business ecosystem;
 - 2.2. mobilise resources and expertise tailored to SMMEs (such as business incubation);
 - 2.3. serve as a catalyst for entrepreneurial activities that will help with job creation;
 - 2.4. stimulate the establishment of new businesses; and
 - 2.5. support local municipalities in attaining the goals of their economic development plans.



GOLD FIELDS